

MOBILITAT INSULAR. Passatgers en transport públic.
INSULAR MOBILITY. Passengers in public transport.

Taula 1. Passatgers en transport públic 2002 -2007. Línies amb més de 20.000 passatgers anuals.

Taula 1. Passengers in public transport 2002-2007. Line with more than 20.000 passengers a year.

	<i>k</i> <i>m</i>	TRAJECTES	G	F	M	A	MG	J	JL	AG	S	O	N	D	TOTAL	V*km
2002	45	Maó-Ciudadella	2.379	2.487	3.272	3.931	7.736	6.504	8.060	10.419	9.330	8.049	2.732	2.553	67.452	3.035.340
	13	Maó-Alaior	2.088	1.927	1.999	2.371	3.069	2.691	3.453	3.464	2.782	2.998	2.744	2.539	32.125	417.625
	5	Maó-Es Castell	10.956	10.708	11.736	13.124	17.165	15.240	16.670	18.932	18.894	15.249	10.353	9.278	168.305	841.525
	5	Maó-Sant Lluís	2.926	3.192	3.512	3.612	3.789	3.234	3.552	3.800	3.127	2.774	2.678	2.348	38.544	192.720
	9	Maó-Punta Prima					11.172	11.786	15.776	18.444	14.143	8.790	99		80.210	721.890
	11	Maó-S'algar	4.509	4.768	5.590	3.558	4.986	5.173	6.318	6.027	5.678	4.204			50.811	558.921
	21	Maó-Son Bou					6.855	6.550	7.494	8.817	6.824	4.576			41.116	863.436
	9	Maó-Cala'n Porter		1.680	2.794	2.175	5.633	5.010	7.452	8.033	6.779	6.018	2.127	2.142	49.843	448.587
	9	Ferrerries-C.Galdana					3.240	3.984	5.584	6.807		2.534			22.149	199.341
			Altres Línies	5.108	4.778	5.117	5.887	22.994	21.393	28.819	33.883	30.399	20.369	4.372	4.106	187.225
		Totals	27.966	29.540	34.020	34.658	86.639	81.565	103.178	118.626	97.956	75.561	25.105	22.966	737.780	7.279.385
2003	45	Maó-Ciudadella	2.465	2.336	2.873	3.864	7.115	7.033	7.484	9.188	9.996	7.745	2.854	2.523	65.476	2.946.420
	13	Maó-Alaior	2.319	2.551	3.077	3.043	3.113	3.117	3.748	3.105	2.839	2.986	2.934	2.718	35.550	462.150
	5	Maó-Es Castell	9.507	9.458	10.660	11.048	16.185	16.765	18.560	17.467	19.712	16.386	9.609	9.396	164.753	823.765
	5	Maó-Sant Lluís	2.392	2.617	3.106	3.449	3.650	3.340	3.471	3.998	3.285	3.321	2.036	1.868	36.533	182.665
	9	Maó-Punta Prima					10.549	14.251	15.749	16.596	11.919	9.161			78.225	704.025
	11	Maó-S'algar				629	5.930	4.944	4.584	4.886	5.196	4.078			30.247	332.717
	21	Maó-Son Bou					5.763	6.014	6.475	6.724	6.343	4.449			35.768	751.128
	9	Maó-Cala'n Porter	2.499	1.715	2.260	2.545	5.955	5.397	5.303	6.540	7.069	6.862	2.015	1.573	49.733	447.597
	9	Ferrerries-C.Galdana					2.657	3.780	5.236	5.534	4.598	2.572			24.377	219.393
			Altres Línies	4.014	6.081	6.921	7.685	20.980	21.912	25.914	27.708	26.022	19.222	4.623	4.122	175.204
		Totals	23.196	24.758	28.897	32.263	81.897	86.553	96.524	101.746	96.979	76.782	24.071	22.200	695.866	6.869.860
2004	45	Maó-Ciudadella	2.595	2.453	3.165	5.154	5.154	11.525	11.759	14.787	14.849	12.462	7.557	5.894	97.354	4.380.930
	13	Maó-Alaior	2.739	2.535	2.885	2.777	2.777	4.776	5.105	4.765	4.796	5.198	6.223	4.898	49.474	643.162
	5	Maó-Es Castell	9.995	9.744	10.102	12.102	12.102	18.304	25.451	25.451	2.151	15.991	12.091	10.763	164.247	821.235

INDICADORS BÀSICS

	5	Maó-Sant Lluís	2.040	1.990	2.271	2.962	2.962	4.703	5.668	5.668	608	4.357	4.082	3.866	41.176	205.880	
	9	Maó-Punta Prima	0	0	0	5.440	5.440	14.246	23.967	23.967	1.519	6.409	0	0	80.988	728.892	
	11	Maó-S'algar	0	0	132	2.182	2.182	5.395	7.501	7.501	827	3.873	0	0	29.591	325.501	
	21	Maó-Son Bou	0	0	0	2.543	2.543	7.122	9.301	9.301	920	3.777	0	0	35.507	745.647	
	9	Maó-Cala'n Porter Maó-Arenal D'en	1.551	1.581	1.575	3.637	3.637	5.427	9.881	9.881	1.062	5.771	0	0	44.002	396.018	
	19	Castell				291	2.911	4.133	7.078	5.894	6.183	4.114	37	0	30.641	582.179	
	21	Maó-Son Parc				194	1.611	3.130	4.459	5.991	4.502	2.493	0	0	22.380	469.980	
	9	Ferrerries-C.Galdana	0			1.386	1.386	5.595	9.139	9.139	771	2.547	0	0	29.962	269.658	
	14	Ferrerries-Ciutadella Ciutadella-Calan	758	721	745	1.901		3.023	3.197	4.203	3.388	2.354	1.581	1.615	23.486	328.804	
	2	Blanes Ciutadella-Calan	103	125	167	2.130	16.297	17.839	15.640	24.467	22.760	17.865	9.985	2.371	129.749	259.498	
	9	Bosch Ciutadella-Cala	44	1.927	3.656	1.984	22.896	23.967	35.078	48.649	41.298	21.695	55	61	201.310	1.811.790	
	3	Blanca Circumval·lació Maó	54	996	2.372	984	7.287	8.534	12.750	18.127	15.060	10.957	155	167	77.443	232.329	
	2	Maó-Aeroport						1.729	4.769	7.334	6.526	6.044	3.588	3.198	33.188	0	
		Altres Línies	12.295	12.684	15.663	23.946	33.555	63.804	61.544	64.897	52.193	50.002	29.111	25.027	444.719	0	
		Totals	32.174	34.756	42.733	69.612	122.739	206.730	256.431	297.184	184.611	179.762	76.740	60.167	1.563.638	9.569.082	
2005	45	Maó-Ciutadella	4.969	6.194	7.796	7.925	12.013	11.920	12.355	15.426	15.117	11.971	7.520	5.889	119.095	5.359.275	
	13	Maó-Alaior	4.380	5.018	5.380	5.757	6.576	5.798	6.205	6.162	6.135	7.101	6.458	5.808	70.778	920.114	
	30	Maó- Ferrerries	1.310	1.443	1.542	1.837	2.954	3.010	3.275	4.092	3.401	2.774	1.637	1.497	28.772	863.160	
	5	Maó-Es Castell	10.183	12.247	12.321	12.697	17.165	18.695	20.491	20.944	20.114	18.049	13.955	13.301	190.162	950.810	
	5	Maó-Sant Lluís	3.606	3.772	4.348	4.329	4.393	4.555	5.110	5.800	4.527	4.633	4.154	4.161	53.388	266.940	
	9	Maó-Punta Prima					10.291	11.385	14.490	16.835	12.127	8.319	0	0	73.447	661.023	
	11	Maó-S'algar				158	4.372	4.379	4.562	5.840	5.555	4.591	0	0	29.457	324.027	
	21	Maó-Son Bou					4.025	5.475	6.523	7.972	7.157	3.903	0	0	35.055	736.155	
	9	Maó-Cala'n Porter Maó-Arenal D'en				223	198	4.916	5.282	7.050	9.066	7.026	4.660	224	180	38.825	349.425
	19	Castell					4.931	6.058	7.890	13.240	10.016	6.356	27	0	48.518	921.842	
	21	Maó-Son Parc					1.743	2.577	7.958	6.104	4.526	3.052	0	0	25.960	545.160	
	32	Alaior-Ciutadella	1.032	1.126	1.303	1.406	2.251	2.536	2.377	3.191	2.722	2.528	1.929	1.550	23.951	766.432	
	9	Ferrerries-C.Galdana					4.634	6.605	8.188	9.124	6.344	3.391	0	0	38.286	344.574	
14	Ferrerries-Ciutadella	1.478	1.527	1.882	1.979	3.167	3.711	4.625	5.320	4.082	3.616	2.613	2.164	36.164	506.296		

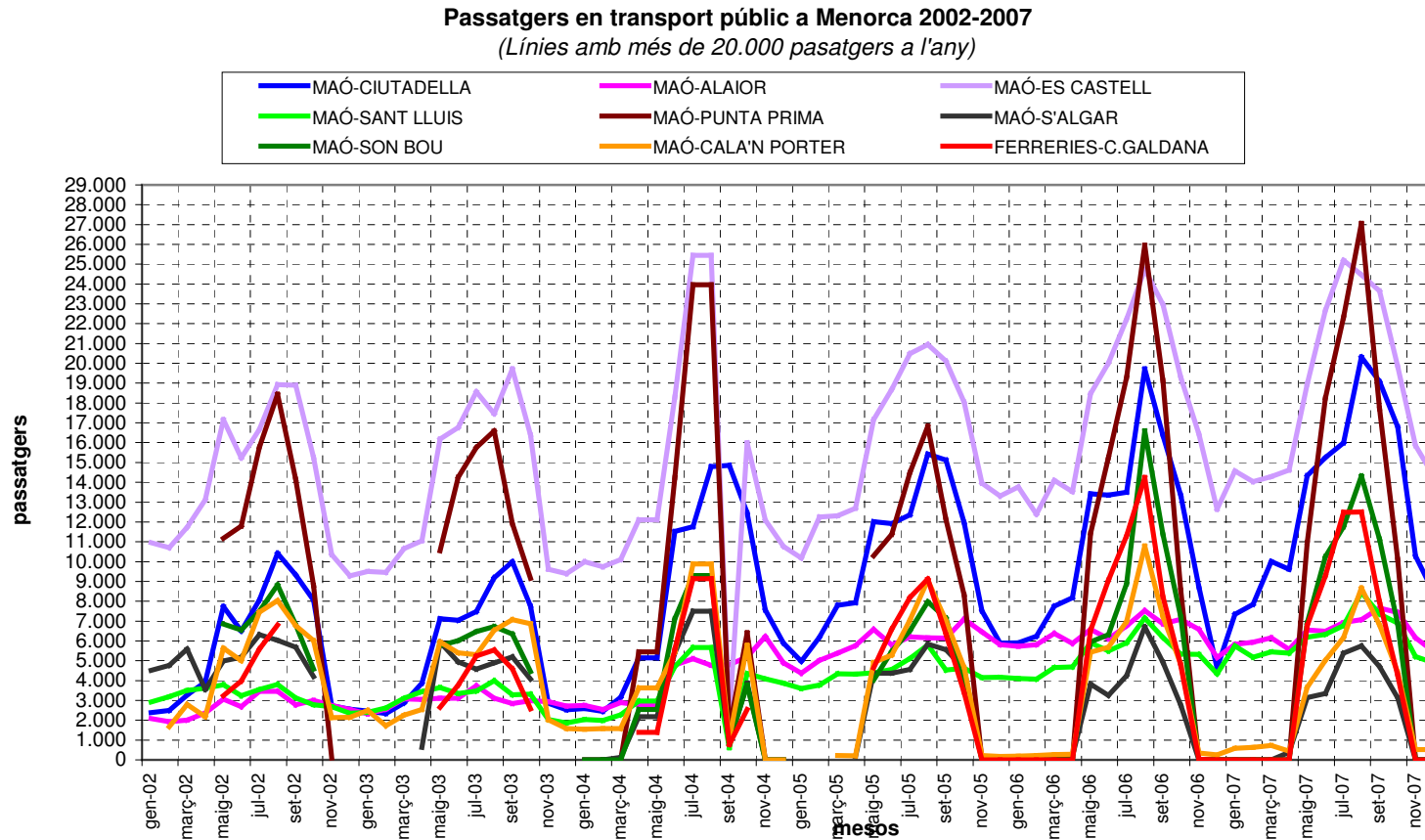
INDICADORS BÀSICS

	2 Maó-Aeroport	3.099	2.909	3.114	4.295	6.203	7.536	9.369	12.211	8.553	6.271	4.191	4.168	71.919	143.838
	Altres Línies	46.142	47.566	52.464	51.556	138.646	155.860	185.120	255.156	189.989	130.705	59.263	48.916	1.361.383	0
	Totals	91.992	99.062	119.588	117.432	303.089	348.642	420.183	567.982	422.088	297.294	128.703	96.335	3.012.390	19.474.027
2007	45 Maó-Ciudadella	7.343	7.842	10.012	9.611	14.337	15.252	15.984	20.324	19.086	16.803	10.281	8.435	155.310	6.988.950
	13 Maó-Alaior	5.829	5.928	6.150	5.576	6.551	6.489	6.935	7.067	7.655	7.434	6.156	5.468	77.238	1.004.094
	21 Maó- Es Mercadal	2.078	2.192	2.451	2.250	2.507	2.373	2.934	2.994	2.640	2.849	2.547	2.316	30.131	632.751
	30 Maó- Ferreries	1.841	1.752	1.934	1.705	2.905	3.172	3.277	3.573	3.170	3.158	2.211	1.770	30.468	914.040
	5 Maó-Es Castell	14.574	14.029	14.288	14.618	18.952	22.670	25.199	24.472	23.646	19.838	15.851	14.308	222.445	1.112.225
	5 Maó-Sant Lluís	5.751	5.181	5.440	5.390	6.181	6.323	6.774	8.447	7.360	6.901	5.211	4.891	73.850	369.250
	9 Maó-Punta Prima	0	0	0	0	10.952	18.253	22.327	27.053	17.720	10.103	0	0	106.408	957.672
	11 Maó-S'algar	0	0	0	377	3.146	3.352	5.376	5.748	4.704	3.130	0	0	25.833	284.163
	21 Maó-Son Bou	0	0	0	0	6.917	10.239	11.766	14.313	11.125	6.858	0	0	61.218	1.285.578
	9 Maó-Cala'n Porter	590	624	721	448	3.658	5.026	6.167	8.669	6.800	4.415	516	520	38.154	343.386
	30 Maó-St Tomas	0	0	0	0	2.242	3.619	3.730	4.572	4.519	3.157	0	0		
	Maó-Arenal D'en														
	19 Castell	228	2.451	9.793	9.110	9.983	9.457	11.422	14.230	10.946	8.769	2.572	0	88.961	1.690.259
	32 Alaior-Ciudadella	1.526	1.418	1.788	1.574	2.209	2.548	2.326	3.524	2.640	2.534	1.685	1.268	25.040	801.280
	8 Alaior-Son Bou	0	0	0	0	2.761	5.065	6.165	7.571	4.949	2.622	0	0	29.133	233.064
	9 Ferreries-C.Galdana	0	0	0	0	6.769	9.290	12.491	12.502	7.977	4.267	0	0	53.296	479.664
	14 Ferreries-Ciudadella	3.123	3.661	3.639	3.457	5.466	5.401	5.570	6.977	5.570	6.073	4.628	3.801	57.366	803.124
	Ciudadella-Calan														
	2 Blanes	856	4.525	14.229	10.624	20.000	27.391	30.157	35.501	25.951	20.762	8.179	1.365	199.540	399.080
	Ciudadella-Calan														
	9 Bosch	0	0	0	0	28.194		51.227	60.427	42.881	24.231	1.746	986	209.692	1.887.228
	Ciudadella-Cala														
3 Blanca	606	807	1.007	2.163	7.653	12.307	15.387	19.680	13.365	7.527			80.502	241.506	
Circumval·lació Maó	6.728	6.556	7.603	7.825	5.645	6.256	6.547	7.357	5.919	5.460	4.026	3.283	73.205	0	
2 Maó-Aeroport	3.905	3.952	5.025	6.324	9.688	11.065	13.660	16.103	12.466	9.668	6.124	5.017	102.997	205.994	
Altres Línies	29.931	31.250	36.357	34.650	67.818	76.627	91.990	112.842	94.618	76.164	46.012	37.847	736.106	0	
	Totals	84.909	92.168	120.437	115.702	244.534	262.175	357.411	423.946	335.707	252.723	117.745	91.275	2.498.732	20.633.308

Font: Departament de Carreteres del Consell Insular de Menorca. Elaboració: OBSAM

Gràfic 1. Passatgers en transport públic a Menorca 2002-07. Línies principals.

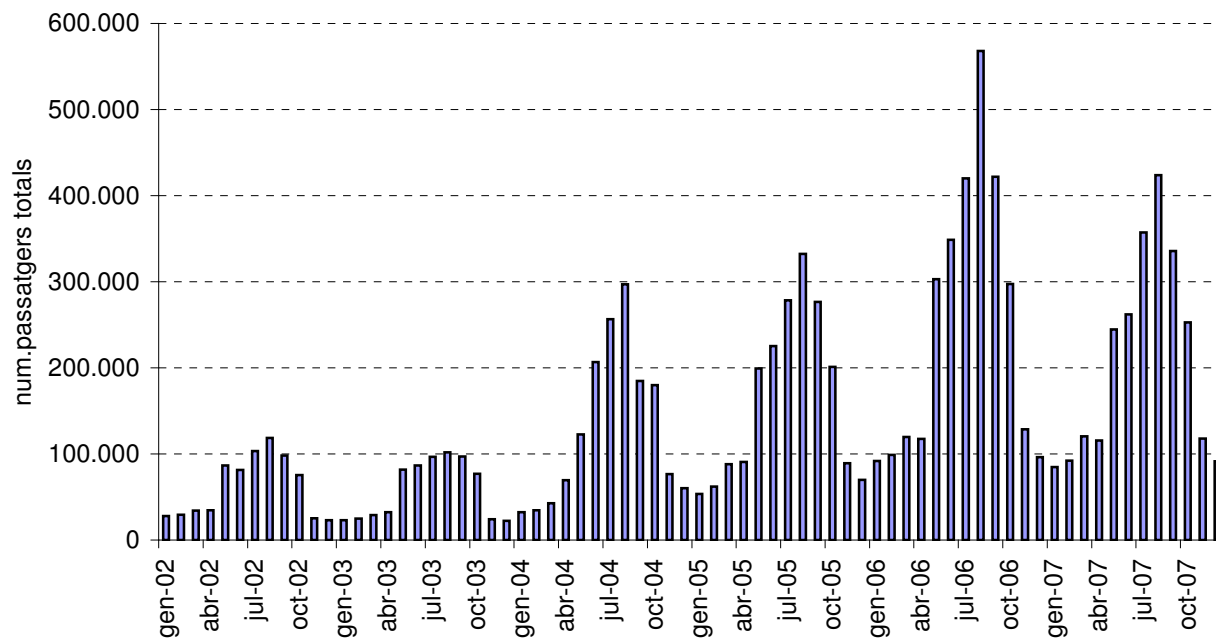
Graphic 1. Passengers in public transport in Minorca 2002-07. Main lines



Font: Departament de Carreteres del Consell Insular de Menorca. Elaboració: OBSAM

Gràfic 2. Passatgers en transport públic a Menorca 2002-2007. Totes les línies.

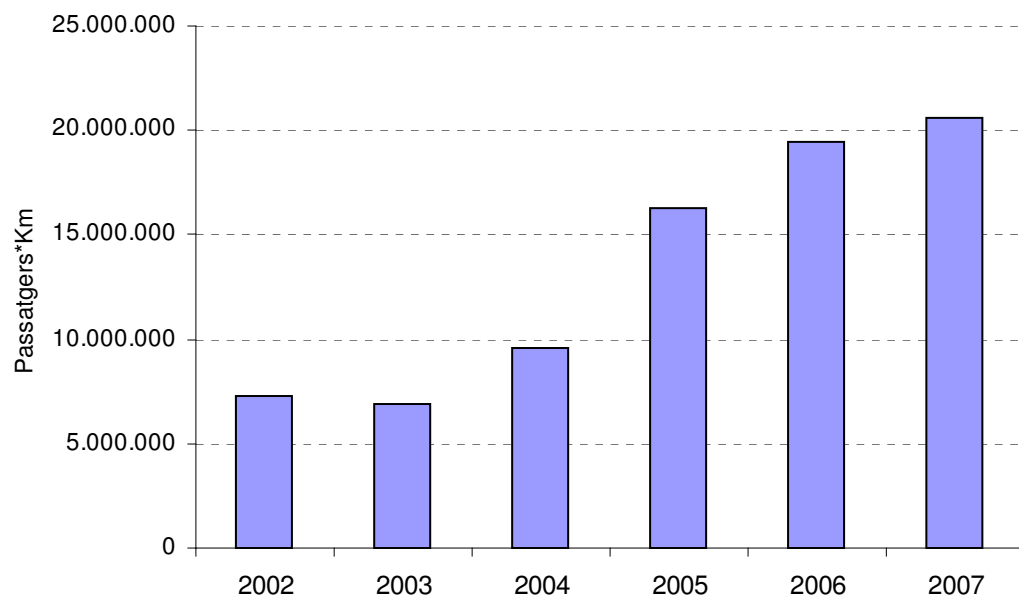
Graphic 2. Passengers in public transport in Minorca 2002-07. All lines.



Font: Departament de Carreteres del Consell Insular de Menorca. Elaboració: OBSAM

Gràfic 3. Nombre de passatgers anuals per kilòmetres de línia 2002-2007. Totes les línies.

Graphic 2. Annual passengers per kilometers of lines in public transport 2002-2007. All lines.



Font: Departament de Carreteres del Consell Insular de Menorca. Elaboració: OBSAM